

ONTARIO

SOFA



FRANKOF



"Ontario" is a model designed to adapt to everyday needs. When creating this sofa, we were inspired by the comfort of daily living. Its design is both laconic and functional. The armrests feature unique rounded edges, adding softness and coziness to the overall silhouette.

FRANKOF



ONTARIO SOFA

THE BACKREST IS THE HIGHLIGHT OF THE "ONTARIO."

It consists of two independent movable panels equipped with multi-position "rastopping" mechanisms, offering 6 fixation levels and allowing the angle to be adjusted from 180 to 90 degrees. This enables you to choose between sitting, semi-reclining, or lying positions depending on your needs. The backrests, like the armrests, are finished with decorative stitching along the edges.

FRANKOF

ONTARIO



** in unfolded form*



“Ontario” is equipped with a “Dolphin” transformation system, which, combined with the movable backrests, creates a flat sleeping surface suitable for everyday use.

The frame is made of E1-grade particle board, softwood timber, plywood (20%), and HDF fiberboard. These materials ensure structural strength, durability, and long service life.



Ontario armchair

Comfort is achieved through high-quality polyurethane foam filling. "Ontario" is an ideal solution for various residential spaces, especially compact apartments or rooms with limited space.



Ontario I



Ontario II

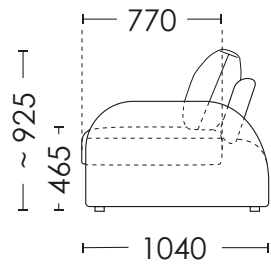
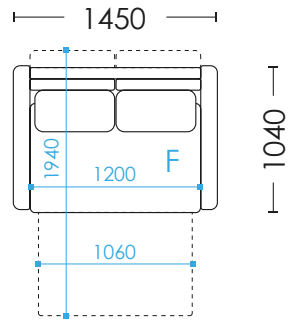


Ontario III

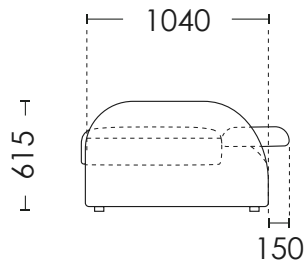
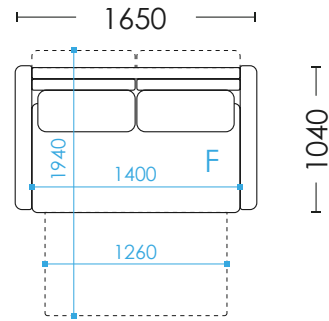


SCHEME

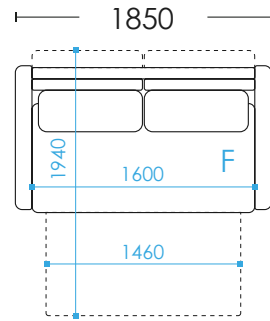
Ontario I



Ontario II



Ontario III



F - folding

UNFOLDING:

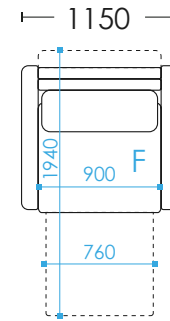
Ontario I: Dolphin (pull-out lift-up) (1060x1940)

Ontario II: Dolphin (pull-out lift-up) (1260x1940)

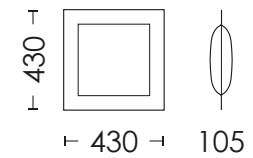
Ontario III: Dolphin (pull-out lift-up) (1460x1940)

Ontario armchair: Dolphin (pull-out lift-up) (760x1940)

Ontario armchair



OT C1



ONTARIO



Ontario I

The set includes two large back-support cushions and one decorative cushion with a soft wavy edge, formed by excess fabric after stitching.

Additional orthopedic support is provided by beech slats in the base. They gently flex and adapt to the body, helping to maintain proper spinal alignment and reduce strain on the back.

FRANKOF



"Ontario" is a sofa that lives with you, becoming part of your home and reminding you that comfort is not a luxury, but a daily feeling.

FRANKOF



FRANKOF



FRANKOF



ONTARIO SOFA

UPHOLSTERED
FURNITURE FACTORY

FRANKOF